



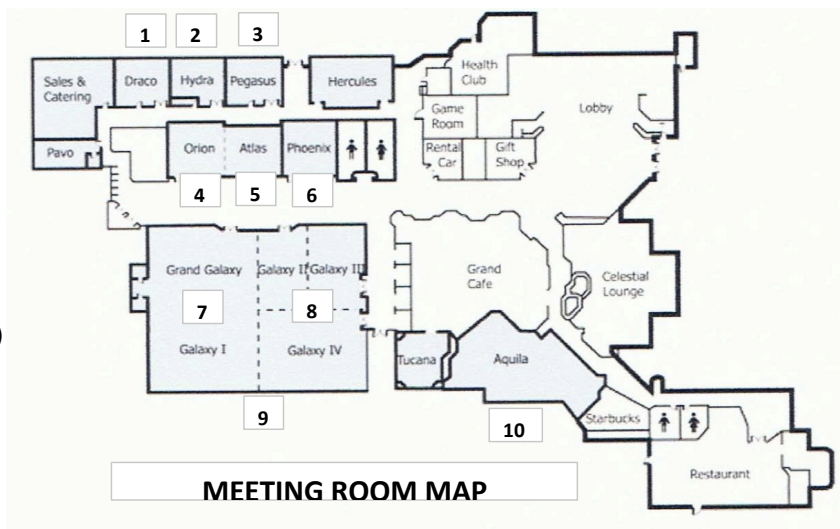
# Winter Regional Meeting

## CLASS DESCRIPTIONS / MAP

January 20-22, 2012



- 1 Draco
- 2 Hydra
- 3 Pegasus
- 4 Orion
- 5 Atlas
- 6 Phoenix
- 7 Galaxy 1
- 8 Galaxy 2,3,4
- 9 Grand Galaxy (Galaxy 1,2,3,4)
- 10 Aquila



FRIDAY, JANUARY 20, 2012				
7:00pm - 8:15pm	So - You Want to be a Coach	Carole Kirkpatrick	General Membership	Galaxy 1
<i>Practical Tips to Improve Coaching. <b>Bling!</b> Is demo quartet.</i>				
7:00pm - 8:15pm	Take a Risk	Sandi Wright	Chorus Leaders	Galaxy 2, 3, 4
<i>It's easy to say and hard to do. Some of our singers are natural risk takers, others have a more difficult time. This class helps you reach deep inside and learn to feel safe while exploring risk-taking behavior. Audience participation.</i>				
8:30pm - 10:00pm	Quartet Connection	Bling! Quartet	General Membership	Galaxy 1
<i>This event is a fun quartet play/tag party hosted by Bling! Quartet. A mixer with quartets and pick-up foursomes to relax and sing tags in a safe, non-threatening / non-competitive space! Cash bar available from 8:15pm until 10:00pm.</i>				
SATURDAY, JANUARY 21, 2012				
9:00am - 10:45am	Be a Conehead (The Cone Shaped Sound)	Sandi Wright	General Membership	Galaxy 1
<i>An audio trip into the world of choral vs. vocal jazz vs. barbershop. Listening to the different styles of music and what makes each identifiable by the shape of its sound, balance, volume level and color of each part. The class will create the ring by the use of a volunteer chorus. Audience participation.</i>				
9:00am - 10:45am	Directing Skills	Carole Kirkpatrick	Directors & Section/Musical Leaders	Galaxy 2, 3, 4
<i>Effective Directing and Conducting Skills</i>				
11:00am - 12:30pm	First Impressions to Encore!	Sandi Wright	Visual Leaders	Galaxy 1
<i>What do the superstars do? How do they manage to grab an audience and have it captivated throughout a whole show. There are theatrical tricks that are common between the megastars. The truth about costumes, make-up, hair, and grooming.</i>				
11:00am - 12:30pm	Rhythm / Tempo	Carole Kirkpatrick	General Membership	Galaxy 2, 3, 4
<i>Rhythm / Tempo / Backbeat / Downbeat - Tempo &amp; Drive Doesn't Mean Fast!</i>				
2:45pm - 4:15pm	Dues Free? Why Not! (Grantwriting and Development)	Sandi Wright	Chorus Leaders	Galaxy 1
<i>Want to be a dues-free chorus? Want to stop paying for theater rentals, coaching, risers, rehearsal space and costumes? An inside look at foundations for the arts and opportunities available for those who want to sing instead of sell pizzas.</i>				
2:45pm - 4:15pm	Word Sounds, Not Necessarily Words	Carole Kirkpatrick	General Membership	Galaxy 2, 3, 4
<i>Emotional Use of Lyrical Planning</i>				
4:30pm - 6:00pm	Putting The Motion in Emotion	Sandi Wright	General Membership	Galaxy 1
<i>When we're sad, afraid, in love, angry, etc., we exhibit non-verbal body language that says more than words could ever say. In this class, participants will learn - and see - what various feelings look like, and how this non-verbal communication can enhance the music we sing. Audience participation.</i>				
4:30pm - 6:00pm	Creative Effective Plan	Carole Kirkpatrick	Directors & Section/Musical Leaders	Galaxy 2, 3, 4
<i>How to Create an Effective Interpretive Plan</i>				
SUNDAY, JANUARY 22, 2012				
9:00am - 10:00am	Int'l Coaching (lottery winners drawn Saturday night)	Sandi Wright	General Membership	Galaxy 1
9:00am - 10:00am	Int'l Coaching (lottery winners drawn Saturday night)	Carole Kirkpatrick	General Membership	Galaxy 2, 3, 4
10:15am - 11:15am	Int'l Coaching (lottery winners drawn Saturday night)	Sandi Wright	General Membership	Galaxy 1
10:15am - 11:15am	Int'l Coaching (lottery winners drawn Saturday night)	Carole Kirkpatrick	General Membership	Galaxy 2, 3, 4